

# Total Solar Eclipse

on the

*Salmon-Challis National Forest*

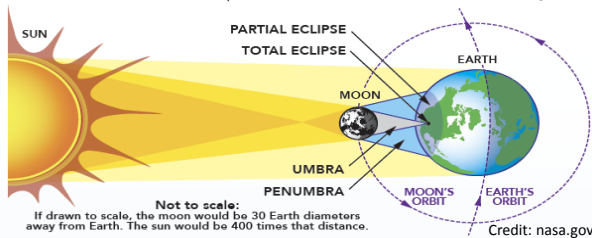
August 21, 2017



## Welcome to the Salmon-Challis National Forest!

*The Salmon-Challis National Forest covers over 4.3 million acres in east-central Idaho. Included within the boundaries of the Forest is 1.3 million acres of the Frank Church-- River of No Return Wilderness Area, the largest contiguous wilderness area in the Continental United States. Rugged and remote, this country offers adventure, solitude and breathtaking scenery.*

**TOTAL SOLAR ECLIPSE: Monday • August 21, 2017**  
This will be the first total solar eclipse visible in the continental United States in 38 years.



## Important Times of the Eclipse

(Based on Borah Peak)

- Start of Partial Eclipse: 10:13:36 A.M.
- Start of Total Eclipse: 11:30:07 A.M.
- Maximum Eclipse: 11:31:13 A.M.
- End of Total Eclipse: 11:32:19 A.M.
- End of Partial Eclipse: 12:54:29 P.M.
- Total Elapsed Time: 2 mins, 11 secs

## Quick Packing Tips

(To Be Self-Contained)

- Food & Water
- Bucket
- Shovel
- Flashlight
- Maps
- Personal Meds/First Aid
- Garbage Bags

## What is a Total Solar Eclipse?

A solar eclipse happens when the moon casts a shadow on the Earth, fully or partially blocking the sun's light in some areas. You can only see the complete eclipse within the lines of totality. The centerline is where the longest duration can be seen. Observers outside this path will see a partial eclipse.

## Important Numbers & Websites

- Emergency: 911
- Wildland Fire Dispatch: (208) 756-5157
- Custer County Sheriff: (208) 879-2232
- Butte County Sheriff: (208) 527-8553

[www.fs.usda.gov/scnf/](http://www.fs.usda.gov/scnf/) (Home Page)

<http://bit.ly/21totecl> (Salmon-Challis NF Eclipse)

<http://bit.ly/17fireinfo> (Salmon-Challis NF Fire Info)

<http://inciweb.nwcg.gov/unit/46/> (InciWeb)

<https://www.fs.usda.gov/main/scnf/maps-pubs>



## Actions Matter

### Please Follow Fire Prevention Tips

**Tip#1:** Keep your vehicle maintained, mufflers secure, tires inspected and safety chains crossed and off the ground. One spark from dragging metal can cause a wildfire.

**Tip#2:** Remember to extinguish your campfire every time you leave camp. Drown your fire with water, stir and feel it to ensure it is cold.

**Tip#3: Don't drive or park on dry grass!**  
Vehicle exhaust systems can reach up to 1,000 degrees and can easily start a wildfire in tall dry grasses.

**Tip#4:** Possession and discharge of fireworks is prohibited on public lands.

**Tip#5:** For wildfire and fire restriction information check [www.idahofireinfo.com](http://www.idahofireinfo.com)

### Vehicle Travel

- Drive on established roads only.
- Do not block traffic, roads must be passable to other vehicles.
- Be alert to wildlife on roadways, especially at dusk and at night.
- Allow yourself extra time due to traffic.
- Motor Vehicle Use Maps (MVUM) are available online or the Avenza App.
- GPS is NOT always reliable, cell phone service can be spotty.

## Salmon-Challis National Forest Offices

**Normal Office Hours:** Mon - Fri 8 a.m. - 4:30 p.m.

**Special Hours Aug 19 & 20:** 10 a.m. - 6 p.m.

### Lost River Ranger District

716 W. Custer  
PO Box 507  
Mackay, Idaho 83251  
Phone #: 208-588-3400

### Challis-Yankee Fork Ranger District

#### Middle Fork Ranger District

311 N. US Hwy. 93  
Challis, Idaho 83226  
Phone # (Challis-Yankee Fork District): 208-879-4100  
Phone # (Middle Fork Ranger District): 208-879-4101



### Leave No Trace: Outdoor Ethics

- Plan ahead and prepare.
- Travel and camp on durable spaces.
- Dispose of waste properly.
- Leave what you find.
- Leave all archaeological sites as you found them. Please do not touch or deface rock art, & do not collect arrowheads or other artifacts.
- Minimize campfire impacts.
- Respect wildlife.
- Be considerate of other visitors.
- Pack it in. Pack it out.



### Eye Safety

- Do not attempt to observe the partial or annular phases of any eclipse with the naked eye. Failure to use appropriate filtration may result in permanent eye damage or blindness!



### All Camping: First Come, First Serve Developed Camping

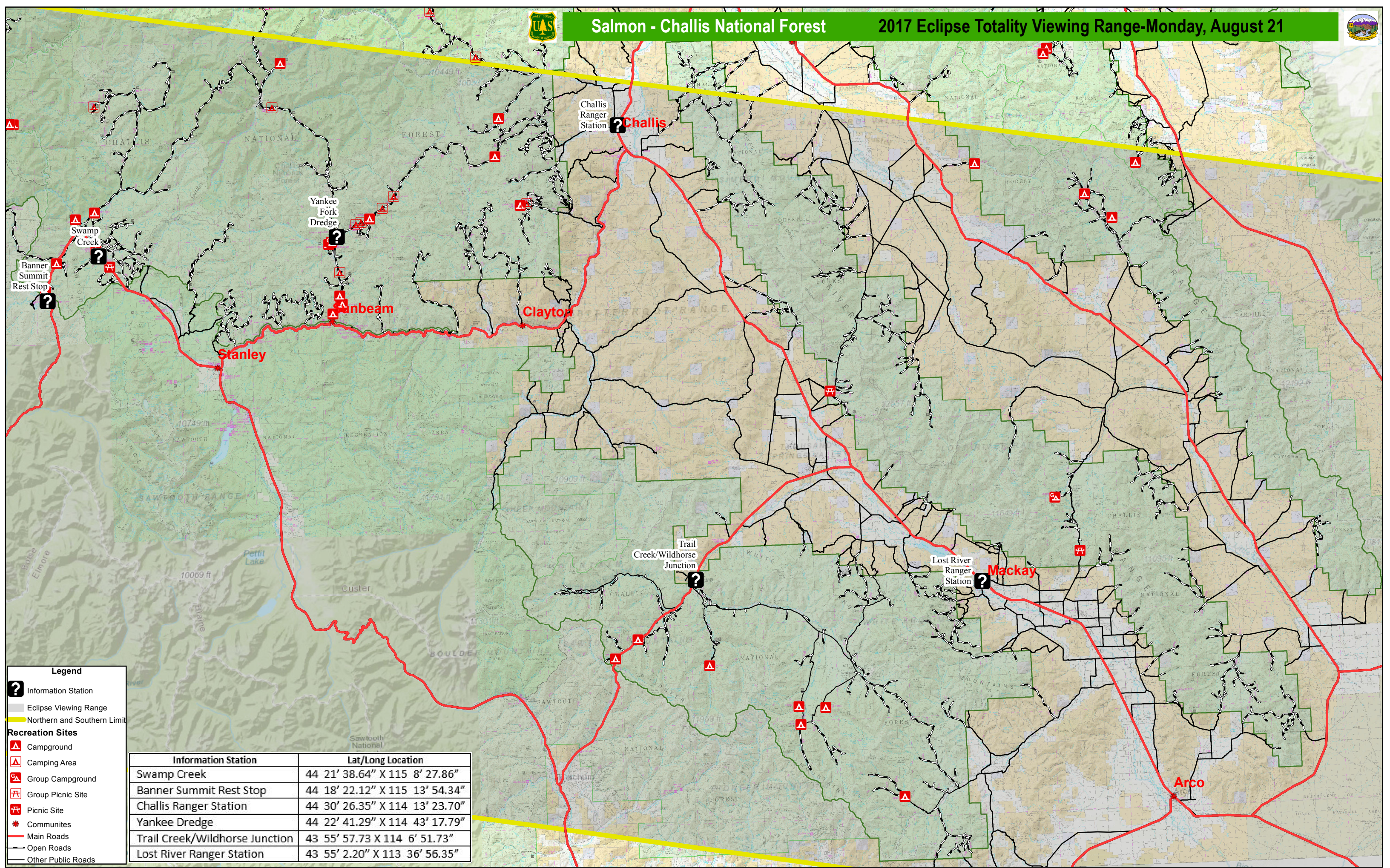
- Established campgrounds with fees.
- 16 day stay limit.
- Toilets at each site.
- Bring any water you may need.

### Undeveloped Camping

- Dispersed camping, free.
- 16 day stay limit.
- 14 day stay limit in Wilderness areas.
- No toilets at sites.
- Bring any water you may need.







**Legend**

Information Station

Eclipse Viewing Range

Northern and Southern Limit

**Recreation Sites**

Campground

Camping Area

Group Campground

Group Picnic Site

Picnic Site

Communities

Main Roads

Open Roads

Other Public Roads

Information Station	Lat/Long Location
Swamp Creek	44 21' 38.64" X 115 8' 27.86"
Banner Summit Rest Stop	44 18' 22.12" X 115 13' 54.34"
Challis Ranger Station	44 30' 26.35" X 114 13' 23.70"
Yankee Dredge	44 22' 41.29" X 114 43' 17.79"
Trail Creek/Wildhorse Junction	43 55' 57.73 X 114 6' 51.73"
Lost River Ranger Station	43 55' 2.20" X 113 36' 56.35"

