

A PERFECT LOCATION FOR THE
ADVENTURING SPIRIT



Early settlers found the Snake River Plain a bit too dry for their taste, so they set about building a dam and irrigation canals along the Snake River. These structures so dramatically changed the landscape—turning arid, cracked soil into fertile agricultural fields—that the area became known as the “Magic Valley.” Everywhere you look, you’ll see evidence of the earth’s forces at work: deep canyons, high bluffs, unusual rock formations, and even lava flows. Sure, this area is a geologist’s dream, but its terrain also delivers big fun for the adventurer in you. The Snake River is at the heart of the valley’s recreation, inviting you to swim, raft, speedboat, and paddle its waters, and BASE jump and zip-line into its stunning canyon. The river’s reservoirs are pristine destinations for camping, hunting, and fishing—and are home to an abundance of big game and other wildlife. Throughout the region, see springs surge from within cliff walls and thundering waterfalls crash and churn into canyons. Wander through lava tubes, discover world-famous fossil beds, and eat homemade ice cream. Take a relaxing drive through Hagerman’s peaceful countryside and make your way to City of Rocks National Reserve, where granite columns and spires stand guard over a 500-acre windswept valley.

Follow **Visit Idaho** on Facebook, Twitter, Instagram, YouTube and other social media channels.


 < ADVENTURES AS DRAMATIC AS THE **LANDSCAPE**
HAGERMAN VALLEY

The valley around Hagerman was the place to be during the Pliocene Epoch (that's about 3.5 million years ago). The area holds the richest fossil deposits of the period, including the oldest fossils anywhere of *Equus*, the genus that includes modern horses. You can see a replica of the "Hagerman Horse" at the Hagerman Fossil Beds National Monument Visitor Center on Main Street downtown and, depending on the season, take a ranger-led tour of the beds. Ask at the visitor center about hiking, biking, and horseback riding in the monument. To see the valley's incredible mix of geological features and rural farmlands, drive the Thousand Springs Scenic Byway, which begins in Bliss and drops down into the Snake River Canyon. South of Hagerman, you'll see the Thousand Springs area, where waters from the Snake River Plain aquifer tumble from canyon walls. The springs' cool temperatures are ideal for rearing trout—in fact, most of the trout eaten in the U.S. come from this valley. You're welcome to tour

the Hagerman National Fish Hatchery, producer of steelhead and rainbow trout. While you're in the area, visit Ritter Island, one of the many units of Thousand Springs State Park. Ritter Island, which sits along the Snake River between two springs, is a lush haven for wildlife, especially heron, golden eagles, and prairie falcon. If you continue along the scenic byway, you'll head into the western Magic Valley at Buhl, a charming little town with a thriving arts community. Detour south past Castleford, and you'll see an awesome sight—Balanced Rock. This giant wind-carved rock is 48 feet high and weighs 40 tons, and it stands precariously on a tiny rock pedestal. Take a picnic and hike up to the rock from the nearby Balanced Rock Park.

If you're driving the Hagerman Valley along I-84, stop at Malad Gorge to see the Malad River rushing into a steep 250-foot canyon on its way to the Snake River. Walk the bridge for a great view of the Devils Washbowl waterfalls. From I-84, access several units of the Thousand Springs State Park, including Billingsley Creek (grab your fishing rod), the 350-acre Earl M. Hardy Box



Balanced Rock



City of Rocks



BASE Jumping



City of Rocks



Snake River



Perrine Bridge

Canyon Springs Preserve, with a 20-foot waterfall and crystal-clear springs, and Niagara Springs, which offers an amazingly rugged drive into the canyon.

In Hagerman, stop for lunch or dinner at the Snake River Grill, where innovative chef Kirt Martin and his staff prepare locally grown catfish, alligator, and trout with fresh, seasonal ingredients. Continue the culinary adventure with a tasting at the organic Holesinsky Vineyard and Winery in Buhl. Treat the kids to homemade ice cream at Cloverleaf Creamery, where you can get huge scoops in unusual flavors like black licorice and vanilla cloverleaf.

TWIN FALLS

On the south rim of the Snake River Canyon sits Twin Falls, the Magic Valley's largest city. You might remember that Evel Knievel tried to jump the Snake River Canyon in 1974 on his special "rocket" motorcycle; he didn't make it very far, but the attempt was impressive nonetheless, considering the canyon is a mile wide and 500 feet deep in that spot. You'll find awesome views of the canyon at the visitor center on the southwest side of the Perrine Bridge, where you'll also likely see BASE jumpers in action, free-falling into the canyon. Stroll to the east side of the bridge to admire a sculpture called The Twins by Coeur d'Alene artist David Clemons. If you look down, you'll see two golf courses and Centennial Park, a great spot for taking photos of the bridge, picnicking, boating, and fishing. At Shoshone Falls Park, catch an amazing view of waterfalls cascading 212 feet down from the rim of the canyon; the falls are actually slightly taller than Niagara Falls—so a selfie is probably in order here. (The falls are most stunning during spring

runoff; ask at the visitor center about current water flow.) There's a lot more to do around here than just look at the canyon, though. Amp up your adventure by rafting or kayaking the Snake River's many rapids, especially in the exciting Murtaugh section. Or rent a kayak at Centennial Park and paddle below the Perrine Bridge toward Pillar Falls and climb on the basalt pillars.

There's also indoor adventure here. Kids will enjoy the fossils and Native American artifacts—and the 50-foot planetarium dome—at the Herrett Center on the College of Southern Idaho campus. Downtown, view works by local artists at Full Moon Gallery, browse Rudy's—A Cook's Paradise, or grab a drink at Annie's Lavender and Coffee, where you'll find lavender essential oils, soaps, and culinary ingredients. See what it was like to live in the Magic Valley long ago at the Twin Falls County Historical Museum, and, in nearby Jerome, at the Idaho Farm & Ranch Museum and Jerome County Historical Museum. In Hansen, take a self-guided tour of Rock Creek Station, a preserved settlement that once served as a transportation center for the Oregon Trail. Twin Falls' culinary options range from the down-home, always-bustling Buffalo Café to the more upscale Canyon Crest and Elevation 486—both on the canyon rim, where stunning views complement outstanding menus.

If you're near Shoshone between May and September, cool off underground at the Shoshone Ice Caves. The "cave" is actually a lava tube with a year-round ice floor. Bring a sweater; even in summer, the 45-minute tour can be

REGIONAL INFO

◀ LARGEST CITY

TWIN FALLS

Population - 45,158

◀ REGIONAL CLIMATE

Summer Average High - 88°

Winter Average High - 35°

Annual Precipitation - 8"

◀ ELEVATION

Highest - 10,339' (Cache Peak)




Lowest - 2,575' (Snake River)

REGIONAL MAP

◀ ENJOY OUR ROADSIDE DISTRACTIONS





SCENIC DRIVES

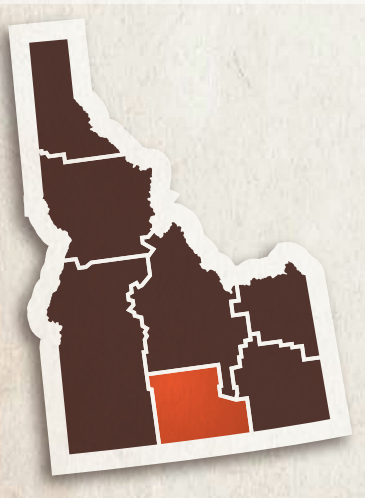
-  ◀ Sawtooth Scenic Byway
208-774-3411
-  ◀ Thousand Springs Scenic Byway
800-255-8946
-  ◀ City of Rocks Backcountry Byway
208-824-5519

For video, itineraries, and a state byway guide, go to visitidaho.org/scenic-byways.

SKI AREAS

-  ◀ Magic Mountain Ski & Summer Resort
magicmountainresort.com
-  ◀ Pomerelle Mountain Resort
pomerelle.com

skiidaho.us



chilly. You can take a self-guided tour of another lava tube at the nearby Mammoth Cave; it's not icy but it shares a location with the very unusual Shoshone Bird Museum.

BURLEY/RUPERT

When you're ready to play, head to Burley, where locals enjoy access to 20-plus miles of Snake River shoreline. You can swim, fish, water-ski, wakeboard, and windsurf here; a lot of the action starts at the public docks and ramps at Riverfront Park and Freedom Park. Be here in June for the Idaho Regatta, when the world's best flat-bottom boat racers converge on the Snake River for three days of crowd-pleasing speed. Northeast of Burley is the town of Rupert, whose town square is adorned by the beautifully restored Wilson Theater—now a gathering place to see movies, plays, and live music. Rupert was actually was one of the first cities in the world to have streets lit by electricity; you can learn more about its past at the Minidoka Historical Museum.

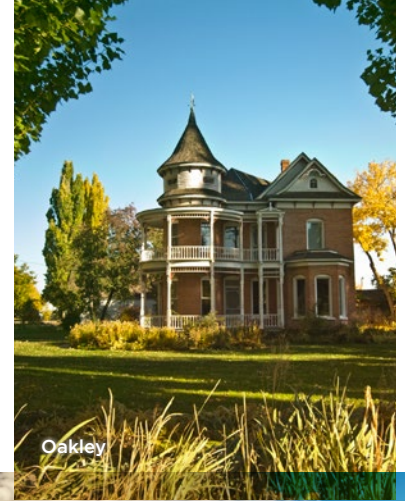
Get your binoculars out for a trip to the nearby Minidoka National Wildlife Refuge, which encompasses about 80 miles of shoreline around Lake Walcott. The water and wetlands here attract more than 200 species of birds, so be on the lookout for American white pelican, blue heron, and cormorant. You might also see antelope, coyote, beavers, and lots and lots of reptiles. The best part? You can camp and fish right in the middle of it—Lake Walcott State Park on the northwest end of the lake offers developed facilities and a boat ramp.

In your travels, you've no doubt seen dramatic canyon lands and hopefully some fossils, but there's even more cool (actually, hot) stuff going on in south central Idaho. Stop in the Mini-Cassia Chamber of Commerce Visitor Center in Heyburn to hear about the Great Rift, the most recent volcanic rift in the U.S., extending more than 65 miles across the Snake River Plain. It's one of only two such geologic features on earth and, at 635 square miles, it's the largest and deepest. Over the past 115,000 years, its lava flows have created ice caves—like those in Shoshone—and spatter cones and cinder cones, which you can see in the

Craters of the Moon area. Whether you like geology or just being in a majestic place, take a drive south of Burley to Castle Rocks State Park and City of Rocks National Reserve. Here, granite spires and columns 60 stories high create one of the most dramatic skylines you'll ever see. More than 700 charted routes await rock climbers—this is renown granite-crag territory—and the unusual landscape just begs to be explored on foot, mountain bike, or horseback. The City of Rocks is also an important California Trail landmark; if you look closely, you can see where many emigrants wrote their names on the rocks and spires.

On the way to City of Rocks, take a quick tour of Oakley, a town founded by Mormon emigrants in 1878. The entire town is listed on the National Register of Historic Places for its collection of stone and brick buildings.

In winter, enjoy a laid-back snow day at Pomerelle Mountain Resort. Located near Albion, this family-owned resort is especially inviting for kids just learning to ski or snowboard. If snowmobiling's more your speed, you'll find terrain at the Mt. Harrison and Howell Canyon areas and a parking lot with a warming shelter about a half mile below Pomerelle's base parking lot. In summer, take a chairlift ride for downhill mountain biking or hiking.





Miracle Hot Springs

RECREATION

Water Play

› The Snake River delivers fun for every speed and sport: spring whitewater rafting along the Murtaugh section, paddling around Ritter Island, and fishing at Lake Walcott State Park.

Climbing

› Choose from 700-plus technical routes in Castle Rocks State Park and City of Rocks National Monument, or try the cliffs at Dierkes Lake in Twin Falls.

Trails

› Walk or bike the scenic canyon on Twin Falls' Snake River Canyon Trail, accessible at the Buzz Langdon Visitor Center and Shoshone Falls Park.

› Plan a mountain getaway to what locals call South Hills, a mix of forest and grasslands within the Cassia mountain range south of Twin Falls. Hike, backpack, mountain bike, or go horseback riding on the many trails that wind through the hills and valleys.

Hot Springs

› Soak it all in at Nat-Soo-Pah south of Twin Falls or Miracle and Banbury Hot Springs Resorts near Buhl.

Snow Sports

› Head to snowy hills at Magic Mountain near Twin Falls and Pomerelle Mountain Resort near Albion for family-friendly skiing and snowboarding.

› There's plenty of snowmobile terrain in Sawtooth National Forest—try South Hills and the Howell Canyon/Mount Harrison area.

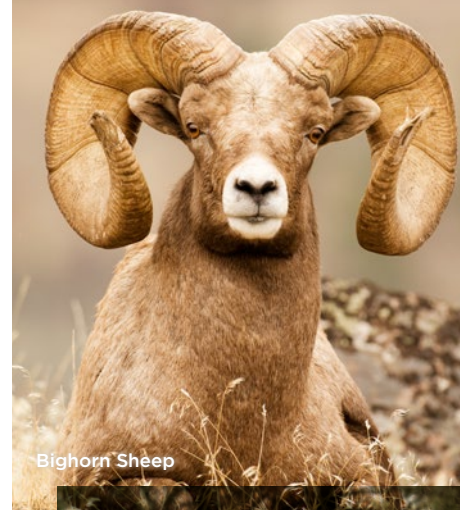
Zip & BASE Jumping

› If your adrenaline is calling, answer with a zip line tour along the Snake River Canyon with Zip the Snake or BASE jump off one of the world's most popular jump sites, Perrine Bridge. This landmark bridge spans the Snake River Canyon north of Twin Falls, 500 feet above the river. Stop in at the visitor center near the bridge to learn more about BASE jumping, or schedule a jump with Tandem Base.

For more details about activities, lodging, and dining in south central Idaho, go to visitidaho.org and visitsouthidaho.com.



Ritter Island



Bighorn Sheep



City of Rocks

◀ STOP SCROLLING AND START **STROLLING**



◀ PUT THIS ON YOUR **PLAYLIST**

Snake River

The heart of south central Idaho is the mighty Snake River. Water transformed the dry southern Idaho desert into productive agricultural land and the resulting reservoirs into recreation havens.

ATTRACTIONS

ALBION

› **Pomerelle Mountain Resort**

The ultimate family winter retreat. Find your “niche” on these lifts.

ALMO

› **City of Rocks National Reserve**

Explore the “Silent City” and discover its endless outdoor adventure opportunities.

BUHL

› **Cloverleaf Creamery**

Dare we say more? Some of the best ice cream in the state.

› **Miracle Hot Springs**

A geothermal oasis in the desert. Plan on making a stop to rejuvenate from your adventures.

HAGERMAN

› **Hagerman Fossil Beds**

Discover the past! Over 3,000 new plant and animal fossil fragments are found each year.

› **Malad Gorge State Park**

View the canyon (the best outlook is from the bridge) and walk along its scenic rim.

TWIN FALLS

› **Canyon Springs Golf Course**

18 holes, driving range, epic views, and pristine greens.

› **Herrett Center for Arts and Science**

From natural history artifacts to works of contemporary art, a place for the whole family to enjoy.

› **Perrine Bridge**

One of the world’s most popular BASE jumping sites (no permits necessary).

› **Shoshone Falls**

Make a splash in Idaho by checking out this 212-foot natural beauty (higher than Niagara Falls).

Southern Idaho Tourism
visitsouthidaho.com
1-800-255-8946



HISTORY

Oregon Trail

› Before the railroad was completed in 1869, more than half a million people walked through Idaho on the Oregon Trail as part of the greatest migration in American history. Emigrants also used alternative trails that traversed southern Idaho, including the California Trail.

You can see where intrepid pioneers inscribed their names in axle grease on the great spires at City of Rocks. Many crossed the Snake River in south central Idaho at either Thousand Springs or Three Island Crossing near Glens Ferry.

Regional Information

Southern Idaho Tourism
800-255-8946, visitsouthidaho.com

Amenities Key

- Airport Shuttle**
- Wi-Fi**
- Free Breakfast**
- Handicap Access**
- Non-smoking**
- Pets OK**
- Motor Coach Parking**
- Dump Station**
- Full Hookups**
- Pull-thru Sites**
- Showers**
- Slideouts OK**
- Tenters Welcome**

ALBION/DECLO

Albion Bed and Breakfast
albionbedandbreakfast.com,
424 W Market St, (208) 673-6474

Campus Grove at Albion
albioncampusgrove.com,
(208) 430-6430

Lonesome Dove Outpost
1100 S Hwy 77, (208) 673-6727

Marsh Creek Inn
www.marshcreekinn.com,
386 S Main St, (208) 673-6259

Village of Trees RV Resort
www.villageoftreesrvresort.com,
274 Hwy 25, (208) 654-2133

ALMO

Almo Inn
www.almoidaho.net, 3020 Elba Almo Rd,
(208) 824-5577

Castle Shadows Bed & Breakfast
2875 S 750 E, (208) 824-5531

Old Homestead
www.oldhomestead-almo-id.
blogspot.com, 2650 S Elba Almo Rd,
(208) 824-5521

BLISS

Amber Inn Motel - Bliss
www.amberinnmotel.com,
17286 US Hwy 30, (208) 352-4441

Y Inn Motel
260 Hwy 30, (208) 352-1008

BUHL

Banbury Hot Springs
banburyhotsprings.com,
1128A Banbury Rd, (208) 543-4098

Buhl RV Park
716 Hwy 30 E, (208) 543-6682

Miracle Hot Springs
www.mhsprings.com,
19073 Hwy 30, (208) 543-6002

Oregon Trail Inn
www.oregontrailinn.com,
510 Broadway Ave S, (208) 543-8814

Siesta Motel
629 Broadway S, (208) 543-6427

BURLEY

Hotels & Motels

Alpine Garden Inn
500 Overland Ave, (208) 878-7766

Best Western Plus Burley Inn & Convention Center | www.bestwesternidaho.com, 800 N Overland Ave,
(208) 678-3501

Budget Motel of Burley
www.burleybudgetmotel.com
900 N Overland Ave, (208) 678-2200

Fairfield Inn & Suites - Burley
230 W 7th St N, (208) 677-5000

RV Parks/Campgrounds

Farmer's Corner RV Park
202 South Hwy 27, (208) 678-5130

EDEN

Amber Inn - Eden
1132 E 1000 S, (208) 825-5200

RV Parks/Campgrounds

Anderson Camp
www.andersoncamp.com,
1188 E 990 S, (208) 825-9800

FILER See Twin Falls

GOODING

Cottage Inn
1331 S Main St, (208) 934-4055

Get Inn Bed & Breakfast
www.getinnidaho.com,
301 University Dr, (208) 934-8579

Gooding Hotel Bed & Breakfast
www.goodinghotelbandb.com,
112 Main St, (208) 934-4374

HAGERMAN

Bed & Breakfasts

Thousand Springs Winery Bed & Breakfast | thousandspringswinery.com,
18852 Highway 30, (208) 352-0150

Hotels & Motels

Billingsley Creek Lodge & Retreat
www.billingsleycreeklodge.com,
17940 Hwy 30, (208) 837-4822

Hagerman Valley Inn
www.hagermanvalleyinn.com,
661 Frog's Landing, (208) 837-6196

RV Parks/Campgrounds

Hagerman RV Village
www.hagermanrvvillage.com,
18049 Hwy 30, (208) 837-4906

High Adventure River Tours, RV Park & Store | 1211 E 2350 S, (208) 837-9005

Sportsman's River Resort
5 Gilhooley Ln, (208) 837-6364

Thousand Springs Resort
www.1000springsresort.com,
18734 Hwy 30, (208) 837-4987

Vacation Rentals

The Haven at the Rock'n H Resort
www.rocknhresort.com,
18022 Hwy 30, (208) 837-2054

HEYBURN

Country RV Village/Travel Information
343 S 300 W, (208) 436-3652

Heyburn Riverside RV Park
www.heyburnidaho.org,
1175 17th St, (208) 679-8158

Kasota Park
www.kasotapark.com,
1325 W Hwy 25, (208) 438-5500
P ♣ 🚗 → ▲

Super 8 - Burley
www.super8.com, 336 S 600 W,
(208) 678-7000
|| ♿ P 🚗 ♣

Tops Motel
www.topsmotel.com,
310 S Hwy 24, (208) 436-4724
P 🚗 ♣

JEROME

Hotels & Motels

Best Western Sawtooth Inn & Suites
www.bestwestern.com/sawtoothinnsuites,
2653 S Lincoln, (208) 324-9200
|| ♿ P ♣ ♣

Comfort Inn & Suites
www.comfortinn.com, 379 Crossroads
Point Blvd, (208) 644-1200
||

Crest Motel
2983 S Lincoln, (208) 324-2670
♣

Days Inn - Twin Falls/Jerome
www.daysinn.com, Centennial Spur,
(208) 324-6400
|| ♿ P 🚗 ♣ ♣

Holiday Motel - Jerome
401 W Main, (208) 324-2361
🚗 ♣

Towles Motel
261 E Main St, (208) 324-3267
🚗 ♣

RV Parks/Campgrounds

Big Trees RV Park
300 1st Ave W, (208) 324-8265
↑ ♣ 🚗 ♣

Twin Falls/Jerome KOA
www.twinfallskoa.com, 5431 Hwy 93,
(208) 324-4169
P ♣ ♣ ↓ ↑ 🚗 ♣ → ▲

OAKLEY

Haight Home Bed and Breakfast
www.haighthomebedandbreakfast.com,
215 E Poplar St, (208) 862-7829
|| 🚗

RUPERT

Hotels & Motels

Drift Inn
www.henrydriftinn.com,
545 F St, (208) 436-1300
🚗 ♣

Flamingo Lodge Motel
406 E 8th St, (208) 436-4321
♿ 🚗 ♣

Uptown Motel
rupertmotel.com, 102 Oneida St,
(208) 436-8383
🚗 ♣ ♣

SHOSHONE/RICHFIELD

CA Bull Elk Ranch Farm Stays
www.cabullekranh.com,
1094 E 1520 N, (208) 404-9632
🚗

West Magic Resort
www.westmagicresort.com,
960 W Magic Rd #16, (208) 487-2571
↑ ♿ ♣ 🚗 → ▲

TWIN FALLS

Hotels & Motels

America's Best Value Inn - Twin Falls
www.americasbestvalueinn.com,
296 Addison Ave W, (208) 733-2010
|| ♣

Best Western Twin Falls Hotel
www.bestwestern.com,
1377 Blue Lakes Blvd N, (208) 736-8000
|| ♿ 🚗

Blue Lakes Inn
www.bluelakesinn.com,
952 Blue Lakes Blvd N, (208) 933-2123
|| ♿ 🚗 ♣ ♣

Capri Motel
1341 Kimberly Rd, (208) 733-6452
🚗 ♣

El Rancho Motel - Twin Falls
380 Addison Ave W, (208) 733-4021
× || 🚗 ♣ ♣

Hampton Inn - Twin Falls
www.hamptoninn.com,
1658 Fillmore, (208) 734-2233
|| ♿ 🚗 ♣

Hilton Garden Inn - Twin Falls
www.twinfalls.hgi.com,
1741 Harrison St N, (208) 733-8500
♿ P 🚗 ♣

Holiday Inn Express - Twin Falls
www.ihg.com,
1554 Fillmore, (208) 732-6001
|| ♿ P 🚗 ♣

Holiday Motel - Twin Falls
holidaymotelTwinfalls.com,
615 Addison Ave W, (208) 733-4330
🚗 ♣ ♣

La Quinta Inn & Suites - Twin Falls
www.lq.com,
539 Poleline Rd, (208) 736-9600
|| ♿ 🚗 ♣ ♣

Monterey Motor Inn
www.montereymotorinn.com,
433 Addison Ave W, (208) 733-5151
🚗 ♣

Motel 6 Twin Falls
www.motel6.com,
1472 Blue Lakes Blvd N, (208) 734-3993
♿ 🚗 ♣

Old Towne Lodge
248 2nd Ave W, (208) 733-5630

Park Motel - Twin Falls
401 Addison Ave W, (208) 734-8800
🚗 ♣

Quality Inn and Suites - Twin Falls
www.choicehotels.com,
1910 Fillmore St N, (208) 734-7494
|| ♿ P 🚗 ♣ ♣

Red Lion Hotel Canyon Springs
www.redlion.com/canyonsprings,
1357 Blue Lakes Blvd N, (208) 734-5000
× ♿ P 🚗 ♣ ♣

Shilo Inn - Twin Falls
www.shiloInns.com,
1586 Blue Lakes Blvd N, (208) 733-7545
× || ♿ P 🚗 ♣ ♣

Super 7 Motel
320 Main Ave S, (208) 733-8770
♿

Super 8 - Twin Falls
www.super8.com,
1260 Blue Lakes Blvd N, (208) 734-5801
|| ♿ P 🚗 ♣ ♣

Twin Falls Motel
2152 Kimberly Rd, (208) 733-8620
🚗 ♣

RV Parks/Campgrounds

Creekside Court
146 Addison Ave W, (208) 733-8841
↑ ♣

Curry Trailer Park
21323 Hwy 30, (208) 733-3961
↑ ♣ ♣

Nat-Soo-Pah Hot Springs & RV Park
www.natsoopah.com,
2738 E 2400 N, (208) 655-4337
↓ ↑ ♣ 🚗 ♣ ♣

Oregon Trail Campground
www.oregontrailcampground.com,
2733 Kimberly Rd, (208) 733-0853
♿ ♣ ♣ ↑ 🚗 ♣ →

Twin Falls 93 RV Park
www.twinfalls93rvpark.com,
2404 Jordan Ln (208) 326-5092
↓ ↑ ♣ 🚗 ♣ → ♣

WENDELL

Hub City Inn
115 S Idaho St, (208) 536-2326
🚗

Intermountain Motor Homes & RV Park
www.idahorv.com,
1894 N Frontage Rd, (208) 536-2301
♿ ♣ ↓ 🚗 ♣ →